

MLTS-915 Solar Lighting Tower

Technical Data

Features

The solar lighting towers take the advantages of solar renewable energy and LED light systems on the road. Ideal for special events, construction sites, security and any other application where on-demand lighting is desired. This system provides cost-effective bright white LED lighting without all of the disadvantages inherent to diesel lighting systems – high operating costs (diesel fuel, maintenance, labor) as well as carbon emissions, noise, fumes and light pollution.

General Specification

Rated voltage	DC24V
Rated Power (LED Lamp)	4*150W
Overall Dimension	4.40*1.54*2.51m (L*W*H)
Rated Voltage	220 V
Weight	2060kg

Solar Panel

Model	ZHM305
Maximum Power (Pmax)	305W
Maximum Power voltage(Vmp)	36.5V
Maximum Power Current (Imp)	8.36A
Power Tolerance	+3%
Dimension	1990*909*50mm(L*W*H)
Lifting angle	0-30degree
Extending type	sliding
Extending area	5.2m ²

Battery Bank

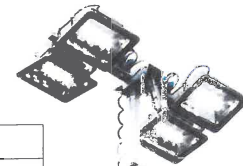
Type	Solar Energy Deposited Type
Model	200AH 12V
Voltage	12V (one battery)
Maximum Charging Current	28.5A
Quantity	10pcs

LED Lamp

Model	TLF-7024-150W
Input Voltage	DC24V
LED Power	140W (one lamp)
System Power	150W (one lamp)
Light Beam Angle	120degree
LED Luminous flux	90lm/w
Correlated Color Temperature	2500-10000K
Protection class	IP65

Trailer

Model	AL-KD B1500(Inertia drum braking with stable towing height, parking brake)
Loading Capacity	1500kg
Drawing Bar	Ø Ring (Ball Option)
Pulling Speed	85km/h
Supporting Wheel	Exact location is adjustable



Solar Charging Controller

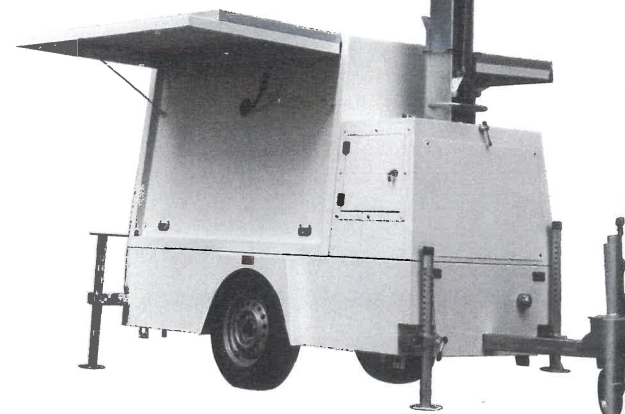
Model	Phocos CXN-40
Rated Current	40A
Rated Voltage	24V
Floating Charge Voltage	27.6V
Battery Charging Control	Stop Charging Voltage: 28V
Light Load Model	Settable Load Model a) 24 hours working b) Working hours setting c) 12hours working at night only
Protection Function	Under Voltage /Overload /Short Circuit
Display function	Battery Charging and discharging condition

Mast

Model	LMLTKL-4000H
Maximum Lifting Height	9m
Mast Power	Hydraulic

Others

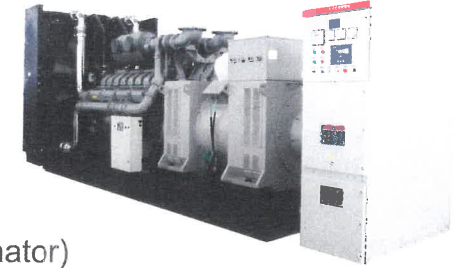
Control System for Extending of Standing legs	Limit Switch Control
Standby Gasoline Generator	2KVA- Output: AC220V
Charger for Mains Supply	AC220V- 30A



High-volt Generator Sets

- Direct high-voltage output, small loss, high efficiency, rapid response and strong start.
- The use of high-voltage units can reduce transmission losses and reduce investment in cable, suitable for long-distance carrier.
- With impact resistance, to load fluctuations.
- with the super-load capacity to launch large-capacity motor with.
- single-phase loading capacity.
- Equipped with high-voltage Switch Cabinet.
- Computer protection.

*Optional low-voltage transformer units Boost programme.



MCJ Serial High-volt Generator sets (6300V, match with JFG alternator)

Gensets Model	Prime Power(KVA)	Engine Model	Alternator Model
MCJ1000-1HG1	1000	KTA38-G5	JFG5001-4
MCJ1250-1HG1	1250	KTA50-G3	JFG5003-4
MCJ1400-1HG1	1400	KTA50-G8	JFG5004-4
MCJ1500-1HG1	1500	KTA50-GS8	JFG5601-4
MCJ1850-1HG1	1850	QSK60-G3	JFG5603-4
MCJ2000-1HG1	2000	QSK60-G4	JFG5604-4

MCJ Serial High-volt Generator sets (10500V, match with JFG alternator)

Gensets Model	Prime Power(KVA)	Engine Model	Alternator Model
MCJ1000-1HG2	1000	KTA38-G5	JFG5003-4
MCJ1250-1HG2	1250	KTA50-G3	JFG5601-4
MCJ1400-1HG2	1400	KTA50-G8	JFG5602-4
MCJ1500-1HG2	1500	KTA50-GS8	JFG5603-4
MCJ1850-1HG2	1850	QSK60-G3	JFG5605-4
MCJ2000-1HG2	2000	QSK60-G4	JFG6301-4

MPJ Serial High-volt Generator sets (6300V, match with JFG alternator)

Gensets Model	Prime Power(KVA)	Engine Model	Alternator Model
MPJ1000-1HG1	1000	4008TAG2A	JFG5001-4
MPJ1250-1HG1	1250	4012-46TWG2A	JFG5003-4
MPJ1350-1HG1	1350	4012-46TWG3A	JFG5004-4
MPJ1500-1HG1	1500	4012-46TAG2A	JFG5601-4
MPJ1710-1HG1	1710	4012-46TAG3A	JFG5602-4
MPJ1850-1HG1	1850	4016TAG1A	JFG5603-4
MPJ2000-1HG1	2000	4016-61TRG2	JFG5604-4
MPJ2250-1HG1	2250	4016-61TRG3	JFG6301-4

MPJ Serial High-volt Generator sets (10500V, match with JFG alternator)

Gensets Model	Prime Power(KVA)	Engine Model	Alternator Model
MPJ1000-1HG2	1000	4008TAG2A	JFG5003-4
MPJ1250-1HG2	1250	4012-46TWG2A	JFG5601-4
MPJ1350-1HG2	1350	4012-46TWG3A	JFG5602-4
MPJ1500-1HG2	1500	4012-46TAG2A	JFG5603-4
MPJ1710-1HG2	1710	4012-46TAG3A	JFG5604-4
MPJ1850-1HG2	1850	4016TAG1A	JFG5605-4
MPJ2000-1HG2	2000	4016-61TRG2	JFG6301-4
MPJ2250-1HG2	2250	4016-61TRG3	JFG6301-4